

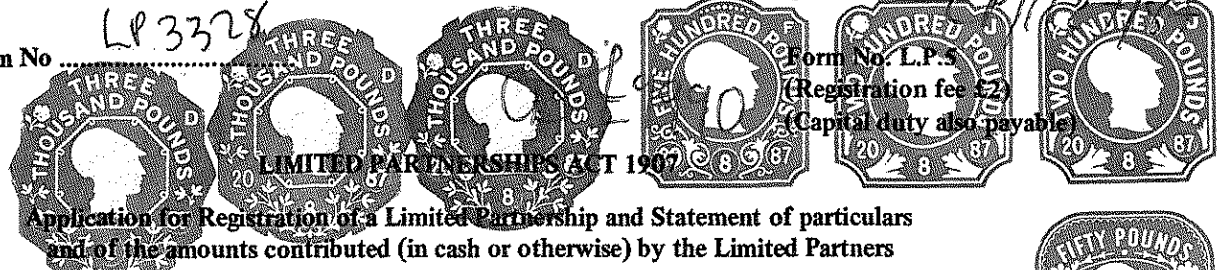
Registration No

LP 3328

Form No. L.P. 5

(Registration fee £2)

(Capital duty also payable)



LIMITED PARTNERSHIPS ACT 1907
Application for Registration of a Limited Partnership and Statement of particulars and of the amounts contributed (in cash or otherwise) by the Limited Partners

(Pursuant to Section 8 of the Limited Partnerships Act 1907 and Section 47 of the Finance Act 1973)

Name of firm or partnership **H. BAUER PUBLISHING**

We, the undersigned, being the partners of the above-named firm, hereby apply for registration as a limited partnership and for that purpose supply the following particulars:

The general nature of the business
Publishers, printers and distributors of magazines, periodicals, newspapers or journals in the United Kingdom

The principal place of business
25-27 Camden Road, London NW1

The term, if any, for which the partnership is entered into
No fixed term

If no definite term, the conditions of existence of the partnership
Terminable upon 28 days' written notice by either partner or upon the passing of a resolution or the making of an order for the winding-up of either partner

Date of commencement 7th of August 1987

The partnership is limited and the full name and address of each of the partners are as follows:

General partners **DISTANTHUGE LIMITED**
Room 150
20 Cophall Avenue,
London EC2R 7JH

Limited partner*	Amounts Contributed (1)	Capital duty payable (2)
Heinrich Bauer Verlag Beteiligungsgesellschaft m.b.H. Burchardstrasse 11 2000 Hamburg 1 W. Germany	£999,000 in cash	£9,990
TOTAL	£999,000	£9,990

Signatures of all the partners

Signed by **GERD BOLLS**
for and on behalf of Distanthuge Limited

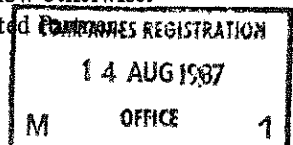
Date 7th of August 1987

Signed by **Peter Heidenreich**
for and on behalf of Heinrich Bauer Verlag Beteiligungsgesellschaft m.b.H.

Presented by: **Herbert Oppenheimer, Nathan & Vandyk, 20 Cophall Avenue, London EC2R 7JH.**
Presentor's reference: **GOL/A**

Notes

- (i) State amount contributed by each limited partner, and whether paid in cash, or how otherwise.
- (ii) The capital duty is £1 for every £100, or part of £100, contributed by each Limited Partner.

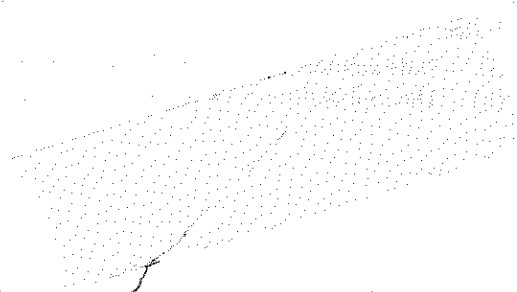


NW
29992
073390
CdF 3344/1/B14732 1500 11/81 TP

09992



RECEIVED
MAY 10 1964
U.S. AIR FORCE
HEADQUARTERS
WASHINGTON, D.C.



22

U

FILE COPY



CERTIFICATE OF REGISTRATION
OF A LIMITED PARTNERSHIP

No. 3328

I hereby certify that the firm

H. BAUER PUBLISHING

having lodged a statement of particulars pursuant to section 8 of the Limited Partnerships Act, 1907, is this day registered as a limited partnership.

Given under my hand at Cardiff the 28TH AUGUST 1987

A handwritten signature in cursive script, appearing to read 'T.G. Thomas', written over a horizontal line.

T.G. THOMAS

Assistant Registrar of Limited Partnerships

C

3 C

3

C